

Senior Staff Nurse

Job Role Profile

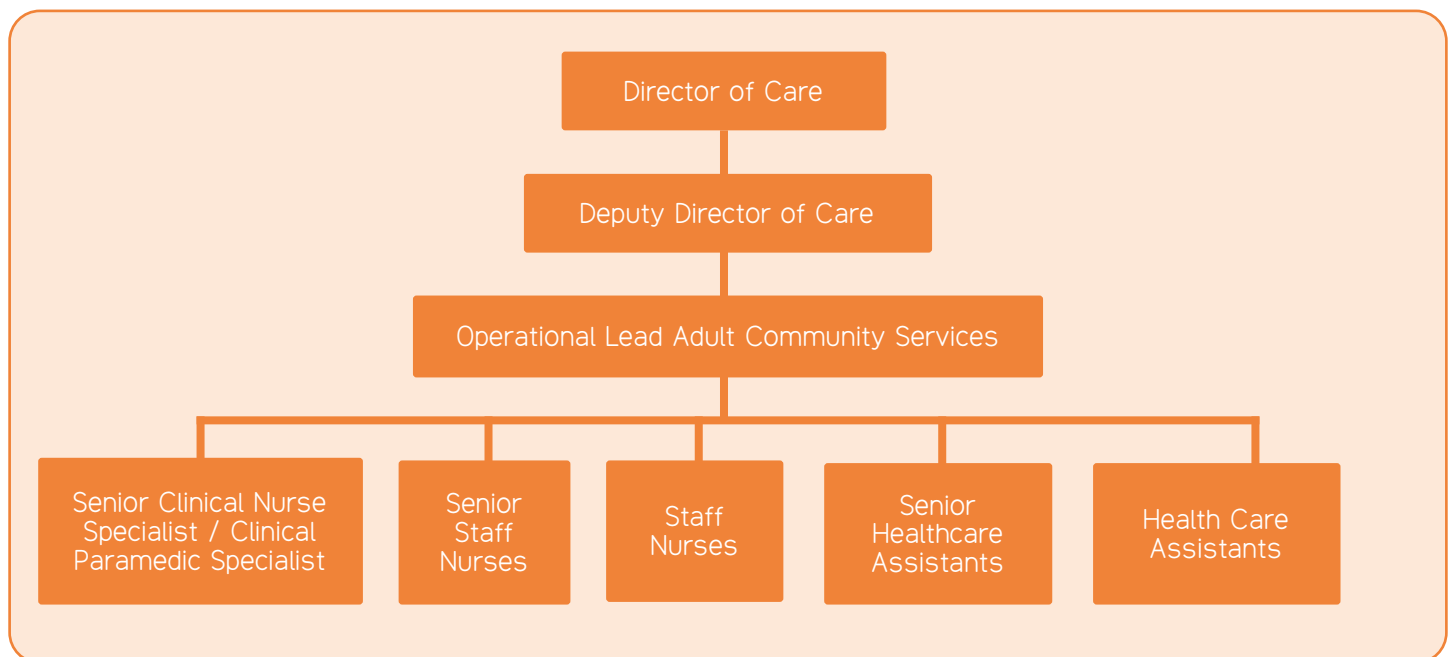
Job Profile

- Salary:** From £32,933 pa
- Location:** **ellenor** Hospice, Coldharbour Road, Gravesend, DA11 7HQ
- Responsible to:** Operational Lead Adult Community Services
- Core Purpose:** To ensure the provision of high quality patient care and family support throughout the organisation.

Job Summary

As a Senior Staff Nurse in the Adult Hospice At Home team you will be visiting patients and their families in their homes across Dartford, Gravesend and Swanley Area. The role will include to ensure all patients receive a holistic assessment, to provide senior nurse support to the team and to work through a set of pre-determined competencies. To develop skills and knowledge required at special nurse level, to ensure the delivery of high quality palliative care.

You must already be working in the capacity of a staff nurse with experience in palliative care or/and community setting and have a full driving licence and access to a car.



Responsibilities

As a Senior Staff Nurse you will have responsibility for:

- managing your caseload
- working as part of the Hospice At Home team
- to work as a member of a multi-disciplinary care team to work towards the achievement of the aims and objectives laid down in the philosophy of **ellenor**
- electronic record keeping
- to advise and support the primary healthcare teams to enable them to provide high quality palliative care
- to educate and train junior members of the team.

Requirements

Senior Staff Nurse will:

- have a full driving licence and access to a car
- three years post RN qualification
- evidence to commit to ongoing professional development
- good communication skills
- ability to work autonomously and in a team
- flexible approach to working.

Information

The post holder will be provided with access to shared office space, IT facilities and secretarial support.

1. Ability to continue NHS Pension.
2. **ellenor** provides a range of services and the post will work across all of our nursing, therapy and wellbeing services.
3. Clinical Supervision/coaching/mentoring dependant on needs.